

6

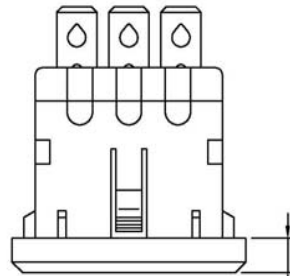
5

4

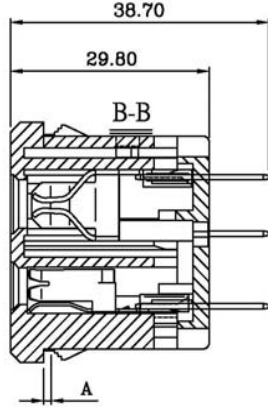
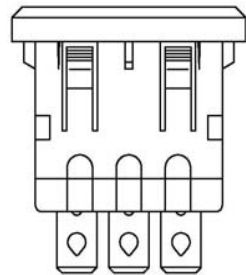
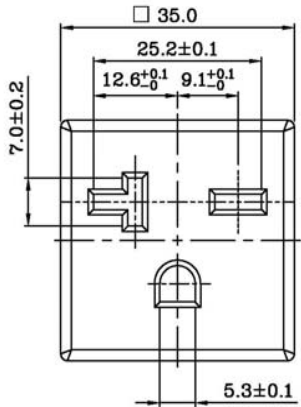
3

2

1



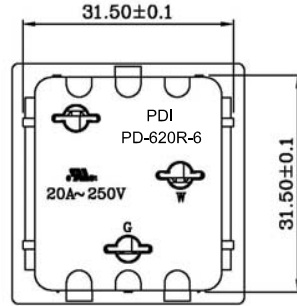
5.0



38.70

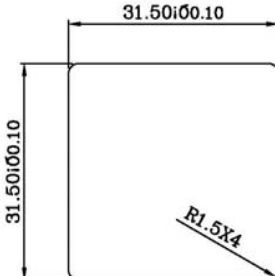
29.80

A



31.50±0.1

31.50±0.1

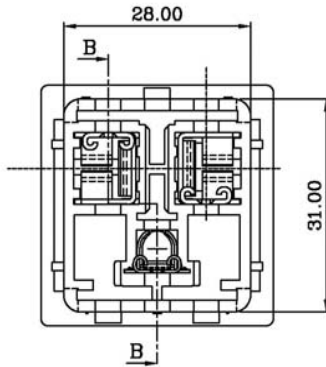


31.50±0.10

31.50±0.10

R1.5X4

PANEL CUT-OUT



28.00

31.00

B

B

REVISIONS	CHANGE	CHKG	CHKD	APPR
	REV	DATE	BY	BY

MATERIAL:
 Housing & Back Cover: Nylon,UL-94V-0 color black
 Contacts: Copper alloy

ELECTRICAL SPECIFICATIONS:
 Rated current & voltage: 20A 250VAC

APPROVALS: 



TOLERANCE UNLESS OTHERWISE SPECIFIED	
X	± 1
X.X	± 0.4
X.XX	± 0.20
DRAWN BY	PB
DATE:	8/10/10
CHECK BY	DATE:
APPR BY	DATE:

Power Dynamics, Inc.

Phone: 973 560-0019 Whippany, New Jersey Fax: 973 560-0076

PART: NEMA 6-20R; 6.4 Q.C. TAB; SNAP IN
 PANEL MOUNT RECEPTACLE

PART #: PD-620R-6		SHEET 1 of 1
SIZE: A	ALL DIMENSIONS FOR REFERENCE ONLY DIMENSIONS ARE IN MILLIMETERS	
SCALE: NTS	REV:	

6

5

4

3

2

1